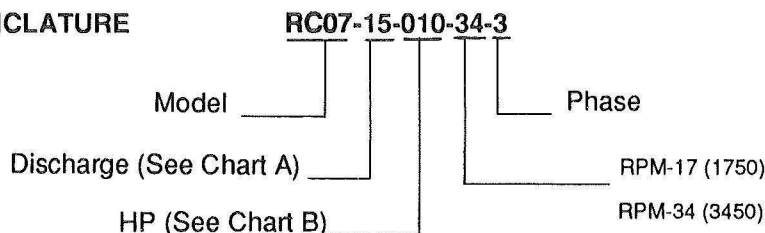


**CENTRIFUGAL PUMPS TYPE RC07 1-1/4", 1-1/2", 2", 2-1/2", 3"****REPAIR PARTS****NOMENCLATURE****CHART A**

12 = 1-1/4"  
15 = 1-1/2"  
20 = 2"  
25 = 2-1/2"  
30 = 3"

**CHART B**

010 = 1 HP  
015 = 1-1/2 HP  
020 = 2 HP  
030 = 3 HP  
050 = 5 HP  
075 = 7-1/2 HP  
100 = 10 HP  
150 = 15 HP  
200 = 20 HP  
250 = 25 HP  
300 = 30 HP

**ORDERING PROCEDURE**

Contact your sales rep to order parts. If you do not know who your sales rep is contact the factory for help in locating your sales rep.

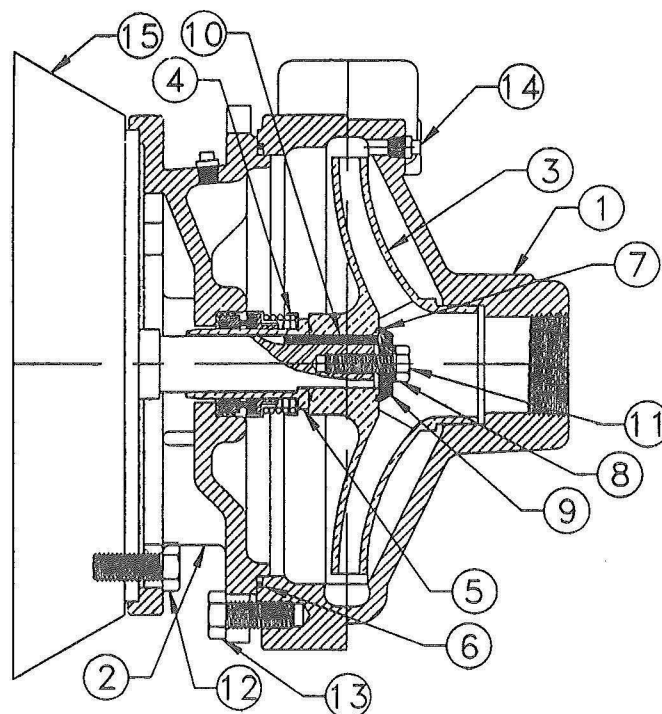
3695 44th Street SE - Grand Rapids, MI 49512  
(P) 616-971-340 (F) 616-971-3421  
[www.mepcollc.com](http://www.mepcollc.com)

Complete part number and description is required when ordering.

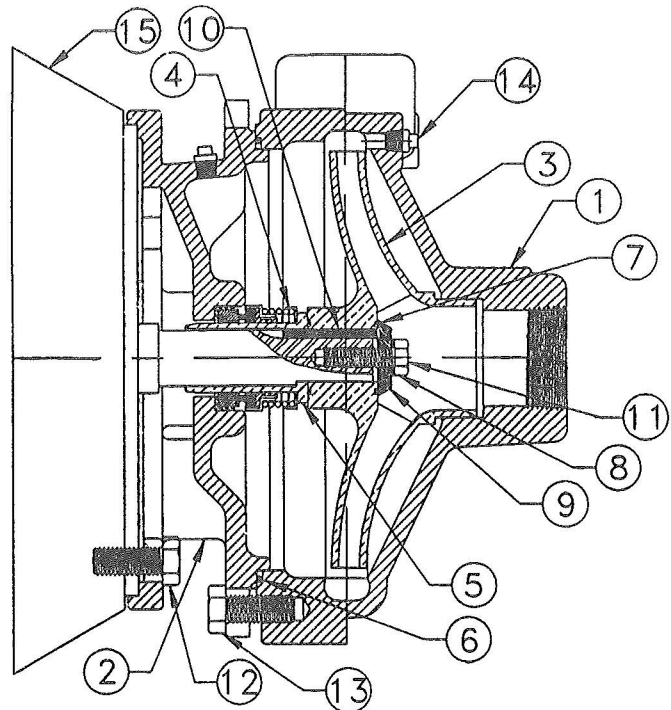
When a part number is not known or shown in the parts catalog, the complete model and serial number of the unit on which the part is to be used must be given.

MEPCO reserves the right to substitute parts if they are interchangeable with those ordered.

ITEM	PART	DESCRIPTION
1	D2-1784	CASE, R7-1-1/4 CAST IRON
1	D2-1783	CASE, R7-1-1/2 CAST IRON
1	D2-1803	CASE, R7-1-1/4 BRONZE
1	D2-1804	CASE, R7-1-1/2 BRONZE
1	D2-1810	CASE, R7-2 CAST IRON
1	D2-1811	CASE, R7-2-1/2 CAST IRON
1	D2-1812	CASE, R7-2 BRONZE
1	D2-1813	CASE, R7-2-1/2 BRONZE
1	100366	CASE, RC07-3 Cast Iron
1	100372	CASE, RC07-3 Bronze
2	C2-4443	ADAPTER, R7 143-184JM CAST IRON
2	C2-4519	ADAPTER, R7 143-184JM BRONZE
2	D2-1773	ADAPTER, R7 213-215JM CAST IRON
2	D2-1805	ADAPTER, R7 213-215JM BRONZE
2	D2-1808	ADAPTER, R7 254-256JM CAST IRON
2	D2-1809	ADAPTER, R7 284-326JM CAST IRON
2	D2-1814	ADAPTER, R7 254-256JM BRONZE
2	D2-1815	ADAPTER, R7 284-326JM BRONZE
2	100373	ADAPTER, RC07-3 254-256JM, C.I.
2	100374	ADAPTER, RC07-3 284-326JM, C.I.
2	100375	ADAPTER, RC07-3 254-256JM, BRZ
2	100376	ADAPTER, RC07-3 284-326JM, BRZ
3	C2-4410	IMPELLER, R7-1-1/2 BRONZE
3	C2-4490	IMPELLER, R7-1-1/2 CAST IRON
3	C2-4491	IMPELLER, R7-1-1/4 BRONZE
3	C2-4492	IMPELLER, R7-1-1/4 CAST IRON
3	C2-4521	IMPELLER, R7-2 143-215JM BRONZE
3	C2-4522	IMPELLER, R7-2 254-326JM BRONZE
3	C2-4523	IMPELLER, R7-2-1/2 143-215JM BRZ
3	C2-4524	IMPELLER, R7-2-1/2 254-326 BRONZE



ITEM	PART	DESCRIPTION
3	C2-4540	IMPELLER, R7-2 143-215JM CI
3	C2-4541	IMPELLER, R7-2 254-326JM CI
3	C2-4542	IMPELLER, R7-2-1/2 143-215JM CI
3	C2-4543	IMPELLER, R7-2-1/2 254-326JM CI
3	100368	IMPELLER, RC07-3 143-215JM, Bronze
3	100371	IMPELLER, RC07-3 143-215JM, C.I.
3	100365	IMPELLER, RC07H-3 143-215JM, Bronze
3	100369	IMPELLER, RC07H-3 143-215JM, C.I.
3	100367	IMPELLER, RC07-3 256-326JM, Bronze
3	100370	IMPELLER, RC07-3 256-326JM, C.I.
4	S-3179	SEAL, BUNA-N 1-1/4
4	S-3780	SEAL, VITON 1-1/4
4	S-3291	SEAL, BUNA-N 1-5/8
4	S-4818	SEAL, EPT 1-1/4
4	S-4905	SEAL, VITON 1-5/8
4	S-4932	SEAL, EPT 1-5/8
5	A2-8908	SLEEVE, 143-215JM BRASS
5	A2-8909	SLEEVE, 254-256JM BRASS
5	A2-8994	SLEEVE, 143-215JM STAINLESS STEEL
5	A2-8995	SLEEVE, 254-256JM STAINLESS STEEL
6	S-4927	O-RING, BUNA-N
6	S-4928	O-RING, EPT
6	S-4929	O-RING, VITON
7	S-4861	O-RING/IMPELLER, BUNA-N 143-215JM
7	S-4895	O-RING/IMPELLER, EPT 143-215JM
7	S-4896	O-RING/IMPELLER, VITON 143-215JM
7	S-4892	O-RING/IMPELLER, BUNA-N 254-256JM
7	S-4909	O-RING/IMPELLER, EPT 254-256JM
7	S-4910	O-RING/IMPELLER, VITON 254-256JM
8	S-3313	WASHER, SEALING BUNA-N 143-215JM
8	S-4836	WASHER, SEALING VITON 143-215JM
8	S-4897	WASHER, SEALING EPT 143-215JM
8	S-3293	WASHER, SEALING BUNA-N 254-256JM
8	S-4907	WASHER, SEALING EPT 254-256JM
8	S-4908	WASHER, SEALING VITON 254-256JM
9	A2-3021-1	WASHER, IMPELLER SST 143-215JM
9	A2-9026-1	WASHER, IMPELLER BRASS 143-215JM
9	A2-3021-4	WASHER, IMPELLER SST 254-256JM
9	A2-9026-4	WASHER, IMPELLER BRASS 254-256JM
10	A2-8910	KEY, 143-215JM
10	A2-8911	KEY, 254-256JM
11	753C02A3	CAP SCREW-Impeller Steel 143-215JM
11	S-5109	CAP SCREW-Impeller BR 143-215JM
11	102D09A2	CAP SCREW-Impeller STL 254-256JM
11	S-5203	CAP SCREW-Impeller Steel 254-256JM
12	102S06A1	CAP SCREW, MOTOR STEEL 143-184JM
12	102S07A1	CAP SCREW, MOTOR STEEL 213-256JM
12	102S08A1	CAP SCREW, MOTOR STEEL 284-326JM
13	102S07A4	CAP SCREW, CASE
14	S-4328	PLUG, STEEL
14	101S01A1	PLUG, BRASS



ITEM	PART	DESCRIPTION
15	S-3142	MOTOR, 1 HP- 1 PH-ODP-1750 RPM-143JM
15	S-3143	MOTOR, 1.5 HP- 1 PH-ODP-1750 RPM-145JM
15	S-3144	MOTOR, 2 HP- 1 PH-ODP-1750 RPM-182JM
15	S-3149	MOTOR, 1 HP- 3 PH-ODP-1750 RPM-143JM
15	S-3150	MOTOR, 1.5 HP- 3 PH-ODP-1750 RPM-145JM
15	S-3151	MOTOR, 2 HP- 3 PH-ODP-1750 RPM-145JM
15	S-3181	MOTOR, 1.5 HP- 3 PH-ODP-3450 RPM-143JM
15	S-3182	MOTOR, 2 HP- 3 PH-ODP-3450 RPM-143JM
15	S-3183	MOTOR, 3 HP- 3 PH-ODP-3450 RPM-145JM
15	S-3184	MOTOR, 5 HP- 3 PH-ODP-3450 RPM-182JM
15	S-3185	MOTOR, 7.5 HP- 3 PH-ODP-3450 RPM-184JM
15	S-3186	MOTOR, 10 HP- 3 PH-ODP-3450 RPM-213JM
15	S-3187	MOTOR, 15 HP- 3 PH-ODP-3450 RPM-215JM
15	S-3188	MOTOR, 20 HP- 3 PH-ODP-3450 RPM-254JM
15	S-3189	MOTOR, 25 HP- 3 PH-ODP-3450 RPM-256JM
15	S-3142E	MOTOR, 1 HP- 1 PH-TEFC-1750 RPM-143JM
15	S-3143E	MOTOR, 1.5 HP- 1 PH-TEFC-1750 RPM-145JM
15	S-3144E	MOTOR, 2 HP- 1 PH-TEFC-1750 RPM-182JM
15	S-3149E	MOTOR, 1 HP- 3 PH-TEFC-1750 RPM-143JM
15	S-3150E	MOTOR, 1.5 HP- 3 PH-TEFC-1750 RPM-145JM
15	S-3151E	MOTOR, 2 HP- 3 PH-TEFC-1750 RPM-145JM
15	S-3181E	MOTOR, 1.5 HP- 3 PH-TEFC-3450 RPM-143JM
15	S-3182E	MOTOR, 2 HP- 3 PH-TEFC-3450 RPM-145JM
15	S-3183E	MOTOR, 3 HP- 3 PH-TEFC-3450 RPM-182JM
15	S-3184E	MOTOR, 5 HP- 3 PH-TEFC-3450 RPM-182JM
15	S-3185E	MOTOR, 7.5 HP- 3 PH-TEFC-3450 RPM-184JM
15	S-3186E	MOTOR, 10 HP- 3 PH-TEFC-3450 RPM-213JM
15	S-3187E	MOTOR, 15 HP- 3 PH-TEFC-3450 RPM-215JM
15	S-3188E	MOTOR, 20 HP- 3 PH-TEFC-3450 RPM-254JM